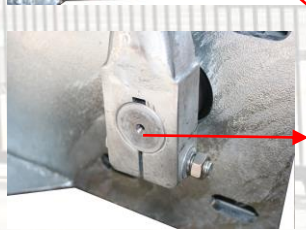


P/N:P250

P250 Swing Gate Motor



- ### Specifications
- CB6 controller, mechanical limit switch.
 - 100% duty cycle three-phase 0.25KW motor(6 poles).
 - Variable speed inverter with different speeds.
 - Speed 90 degree about 12 seconds@50Hz
 - 1.6mm galvanized sheet powder coat cabinet
 - Opener Dimensions: 450Hx430Wx270D(mm)



50mm Dia.

40mm Dia.



External Control metal box
400x400x200mm, Extra

